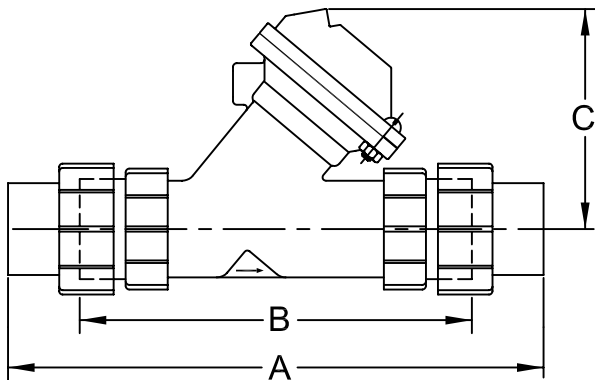
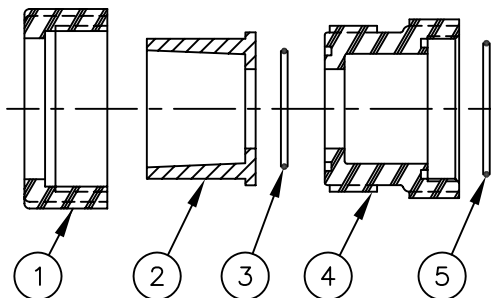


FEMALE SOCKET WELD END CONNECTOR

VALVE SERIES	STANDARD	DIAMETER A	DEPTH B	TAPER C
520	A.S.T.M. 1/2"	.848/.856"	.875"	0°, 24'
	I.S.O. NW-15	20.1/20.3 MM	22.2 MM	0°, 15'
	J.I.S. 16	21.9/22.3 MM	22.2 MM	0°, 19'
521	A.S.T.M. 1"	1.325/1.335"	1.125"	0°, 23'
	I.S.O. NW-25	32.1/32.3 MM	28.6 MM	0°, 15'
	J.I.S. 25	31.9/32.4 MM	28.6 MM	0°, 16'
524	A.S.T.M. 1-1/2"	1.912/1.924"	1.375"	0°, 23'
	I.S.O. NW-40	50.1/50.3 MM	34.9 MM	0°, 15'
	J.I.S. 40	47.9/48.5 MM	34.9 MM	0°, 16'



VALVE SERIES	UNITS	LENGTH A	LENGTH B	HEIGHT C
520	INCHES	7.00	4.87	2.62
	MM	177.8	123.7	66.5
521	INCHES	9.00	6.31	4.06
	MM	228.6	160.3	103.1
524	INCHES	12.50	9.31	5.06
	MM	317.5	235	128.5



UNION END ADAPTOR

SERIES 520 UNION END ADAPTOR KITS

A.S.T.M. 1/2" INCLUDES ITEMS 1,2,3,4,5	E.P.D.M. O-RING BUTYL O-RING FKM O-RING	1070184 (K520100) 1070185 (K520101) 1070186 (K520102)
I.S.O. NW-15 INCLUDES ITEMS 1,2,3,4,5	E.P.D.M. O-RING BUTYL O-RING FKM O-RING	1070190 (K520103) 1070191 (K520104) 1070192 (K520105)
J.I.S. - 16 INCLUDES ITEMS 1,2,3,4,5	E.P.D.M. O-RING BUTYL O-RING FKM O-RING	1070193 (K520106) 1070194 (K520107) 1070195 (K520108)

SERIES 521 UNION END ADAPTOR KITS

A.S.T.M. 1" INCLUDES ITEMS 1,2,3,4,5	E.P.D.M. O-RING BUTYL O-RING FKM O-RING	1070202 (K521100) 1070153 (K521101) 1070154 (K521102)
I.S.O. NW-25 INCLUDES ITEMS 1,2,3,4,5	E.P.D.M. O-RING BUTYL O-RING FKM O-RING	1070204 (K521103) 1071155 (K521104) 1071156 (K521105)
J.I.S. - 25 INCLUDES ITEMS 1,2,3,4,5	E.P.D.M. O-RING BUTYL O-RING FKM O-RING	1070205 (K521106) 1071157 (K521107) 1071158 (K521108)

SERIES 524 UNION END ADAPTOR KITS

A.S.T.M. 1-1/2" INCLUDES ITEMS 1,2,3,4,5	E.P.D.M. O-RING BUTYL O-RING FKM O-RING	1070208 (K524100) 1071220 (K524101) 1070209 (K524102)
I.S.O. NW-40 INCLUDES ITEMS 1,2,3,4,5	E.P.D.M. O-RING BUTYL O-RING FKM O-RING	1070212 (K524103) 1071221 (K524104) 1070213 (K524105)
J.I.S. - 40 INCLUDES ITEMS 1,2,3,4,5	E.P.D.M. O-RING BUTYL O-RING FKM O-RING	1070214 (K524106) 1071222 (K524107) 1070215 (K524108)

NOTE: ALL ADAPTOR KITS CONTAIN (2) ADAPTORS, (ONE KIT REQ'D PER VALVE)

NO.	DESCRIPTION	PART NO.	
SERIES 520 UNION END ADAPTOR			
1	TAILPIECE NUT	1074995 (520010K)	
2	FEMALE SOCKET WELD END CONNECTOR	A.S.T.M. 1/2"	1074991 (520007)
		I.S.O. NW-15	1074992 (520008)
		J.I.S. 16	1074993 (520009)
3	O-RING	E.P.D.M.	1071730 (ORV-117)
		BUTYL	1071766 (ORJ-117)
		FKM	1071801 (ORV-117)
4	TAILPIECE	1074996 (520011K)	
5	O-RING	E.P.D.M.	1071731 (ORV-120)
		BUTYL	1071767 (ORJ-120)
		FKM	1071802 (ORV-120)

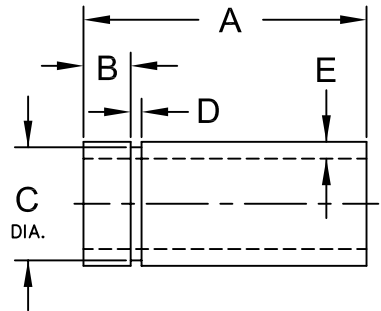
NO.	DESCRIPTION	PART NO.	
SERIES 521 UNION END ADAPTOR			
1	TAILPIECE NUT	1075067 (521010K)	
2	FEMALE SOCKET WELD END CONNECTOR	A.S.T.M. 1"	1075061 (521007)
		I.S.O. NW-25	1075063 (521008)
		J.I.S. 25	1075065 (521009)
3	O-RING	E.P.D.M.	1071732 (ORV-125)
		BUTYL	1071768 (ORJ-125)
		FKM	1071803 (ORV-125)
4	TAILPIECE	1075068 (521011K)	
5	O-RING	E.P.D.M.	1071733 (ORV-128)
		BUTYL	1071769 (ORJ-128)
		FKM	1071804 (ORV-128)

NO.	DESCRIPTION	PART NO.	
SERIES 524 UNION END ADAPTOR			
1	TAILPIECE NUT	1075150 (524010K)	
2	FEMALE SOCKET WELD END CONNECTOR	A.S.T.M. 1 1/2"	1075144 (524007)
		I.S.O. NW-40	1075146 (524008)
		J.I.S. 40	1075148 (524009)
3	O-RING	E.P.D.M.	1071735 (ORV-137)
		BUTYL	1071771 (ORJ-137)
		FKM	1071807 (ORV-137)
4	TAILPIECE	1075151 (524011K)	
5	O-RING	E.P.D.M.	1071736 (ORV-138)
		BUTYL	1071772 (ORJ-138)
		FKM	1071808 (ORV-138)

SEE FORM 1078152 FOR SOCKET WELD & FLANGED ADAPTORS

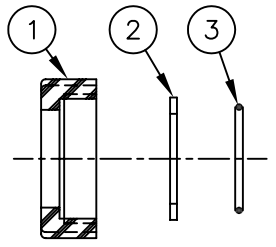
FORM NO. 1081309

B	REMOVED "STRIKE THROUGH" OF OLD P/N'S	NONE	MSM	04AUG03	
REV	DESCRIPTION	ECO	DWN	DATE	APVD
 OSMONICS ROCKFORD OPERATIONS 2412 GRANT AVENUE, ROCKFORD, IL 61103-3991 (815) 964-9421 WWW.OSMONICS.COM					
SERIES 520, 521 & 524 DIAPHRAGM VALVE					
END CONNECTOR PARTS & KITS					
SCALE	DRAWN	DATE	DWG. NO.		
N/A	JWB	25JUL01			1078140



RING GROOVE DIMENSIONS

VALVE SERIES	UNITS	LENGTH A	LOCATION B	DIA. C	WIDTH D	WALL THK E
520	INCHES	2.25	0.500	0.730	0.115	0.147
	MM	57.2	12.7	18.5	2.9	3.7
521	INCHES	3.00	0.500	1.200	0.115	0.179
	MM	76.2	12.7	30.5	2.9	4.55
524	INCHES	4.00	0.875	1.800	0.115	0.200
	MM	57.2	22.2	45.7	2.9	5.1



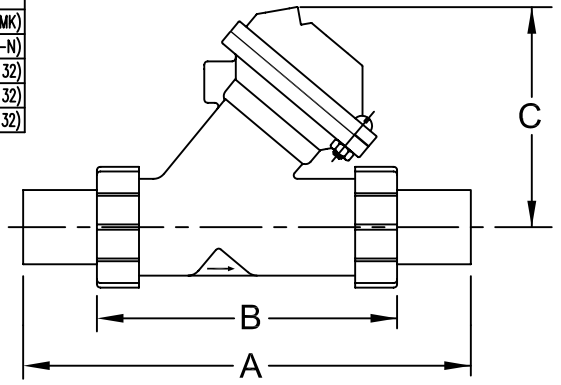
RETAINER NUT/SPLIT RING CONNECTOR

VALVE SERIES		520	521	524	
1	RETAINER NUT	1074974 (520-MK)	1075041 (521-MK)	1075112 (524-MK)	
2	SPLIT RING	1074975 (520-N)	1075042 (521-N)	1075113 (524-N)	
3	O-RING	E.P.D.M.	1071730 (OR-117)	1071732 (OR-125)	1071734 (OR-132)
		BUTYL	1071766 (ORJ-117)	1071768 (ORJ-125)	1071770 (ORJ-132)
		FKM	1071801 (ORV-117)	1071803 (ORV-125)	1071806 (ORV-132)

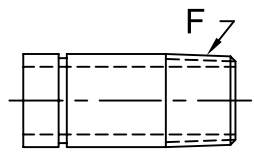
RETAINER NUT/SPLIT RING CONNECTOR KITS

SERIES 520 INCLUDES ITEMS 1,2,3	E.P.D.M. O-RING	1070238 (K520109)
	BUTYL O-RING	1070239 (K520110)
	FKM O-RING	1070240 (K520111)
SERIES 521 INCLUDES ITEMS 1,2,3	E.P.D.M. O-RING	1070244 (K521109)
	BUTYL O-RING	1071159 (K521110)
	FKM O-RING	1071160 (K521111)
SERIES 524 INCLUDES ITEMS 1,2,3	E.P.D.M. O-RING	1070246 (K524109)
	BUTYL O-RING	1071223 (K524110)
	FKM O-RING	1070247 (K524111)

NOTE: ALL CONNECTOR KITS CONTAIN (2) CONNECTORS, (ONE KIT REQ'D PER VALVE)

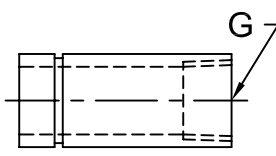


GROOVED ADAPTOR KITS



MALE PIPE THREAD

VALVE SERIES	520	521	524
PART NO.	1070221 (K520-P)	1070227 (K521-P)	1070233 (K524-P)
DIM. F	1/2" NPT	1" NPT	1-1/2" NPT



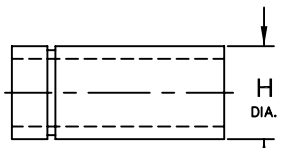
FEMALE PIPE THREAD

VALVE SERIES	520	521	524
PART NO.	1070222 (K520-PA)	1070228 (K521-PA)	1070234 (K524-PA) (K524-PF)
DIM. G	3/8" NPT	3/4" NPT	1-1/4" NPT 1-1/4" BSP

VALVE SERIES	UNITS	LENGTH A	LENGTH B	HEIGHT C
520	INCHES	7.00	3.93	2.62
	MM	177.8	99.8	66.5
521	INCHES	9.00	4.50	4.06
	MM	228.6	114.3	103.1
524	INCHES	13.25	7.75	5.06
	MM	336.5	196.9	128.5

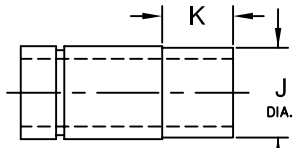
SEE FORM 1078152 FOR SOCKET WELD & FLANGED ADAPTOR

FORM NO. 1081309



MALE SOCKET WELD

VALVE SERIES	520	521	524
PART NO.	1070220 (K520-PC)	1070226 (K521-PC)	1070232 (K524-PC)
DIM. H	0.840 IN. 21.3 MM	1.315 IN. 33.4 MM	1.900 IN. 48.3 MM



MALE SOCKET WELD (METRIC)

VALVE SERIES	520	521	524
PART NO.	1071057 (K520-PE)	1071091 (K521-PE)	1071162 (K524-PE)
DIM. J	20.2 MM	32.2 MM	50.2 MM
DIM. K	15.9 MM	25.4 MM	30.0 MM

B	REMOVED "STRIKE THROUGH" OF OLD P/N'S	NONE	MSM	04AUG03
REV	DESCRIPTION	ECO	DWN	DATE APVD



OSMONICS
ROCKFORD OPERATIONS

2412 GRANT AVENUE, ROCKFORD, IL 61103-3991 (815) 964-9421
WWW.OSMONICS.COM

**SERIES 520, 521 & 524 DIAPHRAGM VALVE
END CONNECTOR PARTS & KITS**

SCALE	DRAWN	DATE	DWG. NO.
N/A	JWB	25JUL01	1078140

NOTE: ALL ADAPTOR KITS CONTAIN (2) ADAPTORS, (ONE KIT REQ'D PER VALVE)