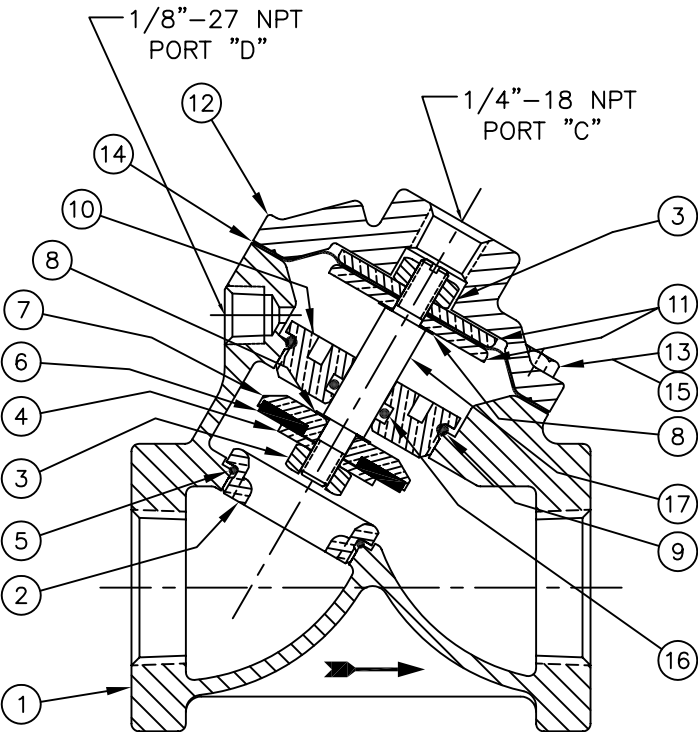


INCHES
MILLIMETERS



1070001 (V42B-0000-00000) (3/4" NPT)
1070011 (V42C-0000-00000) (1" NPT)

NORMALLY OPEN (STANDARD)

REPAIR PARTS KITS			
DESCRIPTION	PART NO.		
DIAPHRAGM & SEALS KIT CONSISTS OF ITEM NO'S 3(2),5,6,8(2),9,14,16	1070068 (421-RA)	1070081 (421-RAE)	1070093 (421-RAV)
	BUNA N INCLUDES DIAPHRAGM	E.P.D.M. INCLUDES DIAPHRAGM	FKM INCLUDES DIAPHRAGM
	1074119 (421-FB)	1074119 (421-FB)	1074120 (421-FV)
INT. PARTS KIT (NORM. OPEN) CONSISTS OF STANDARD ITEM NO'S 4,7,10,11(2),17	1070118 (421-RF)		
SEAT (ITEM NO. 2)	1074158 (421-MO)		

ASSEMBLY TOOLS	
DESCRIPTION	PART NO.
FOR INSTALLATION & REMOVAL OF SEAT (ITEM #2) (TOOL NOT SHOWN)	1074161 (421-MT)
FOR INSTALLATION & REMOVAL OF SHAFT GUIDE (ITEM #10) (TOOL NOT SHOWN)	1074124 (421-GT)

NOTE:

1. AMERICAN NATIONAL STANDARD TAPER PIPE THREADS (NPT) PER ANSI B2.1-1968
2. VALVES AVAILABLE WITH B.S.P. OR J.I.S. END CONNECTIONS.

NO.	DESCRIPTION		STD	PART NO.	QTY.
1	BODY	CAST IRON	3/4" NPT	* 1074085 (421-A3)	1
			1" NPT	* 1074088 (421-A4)	
	CAST BRASS	3/4" NPT	1074077 (421-AB3)	1074080 (421-AB4)	
2	SEAT (REQ'S ASSY TOOL)	BRASS		* 1074158 (421-MO)	1
3	HEX LOCK NUT	(1/4-28)		* 1071650 (NUS-0010)	2
4	DISC PLATE	BRASS		* 1074147 (421-K)	1
		STN. STL.		1074149 (421-KS)	
5	O-RING	BUNA N		* 1071676 (ORB-024)	1
		E.P.D.M.		1071721 (ORE-024)	
		FKM		1071791 (ORV-024)	
6	DISC	BUNA N		* 1074140 (421-J)	1
		E.P.D.M.		1074143 (421-JE)	
		FKM		1074146 (421-JV)	
		HYCAR		1074144 (421-JH)	
7	DISC HOLDER	BRASS		* 1074126 (421-H)	1
		STN. STL.		1074128 (421-HS)	
8	GASKET	COPPER		* 1073948 (200-GG)	2
		LEAD		1073949 (200-GGL)	
9	O-RING	BUNA N		* 1071693 (ORB-125)	1
		E.P.D.M.		1071732 (ORE-125)	
		FKM		1071803 (ORV-125)	
10	SHAFT GUIDE (REQ'S ASSY TOOL)	BRASS		* 1074122 (421-GG0)	1
		STN. STL.		1074123 (421-GGS)	
11	DIAPHRAGM PLATE	BRASS		* 1074117 (421-D)	2
		STN. STL.		1074118 (421-DS)	
12	CAP	CAST IRON		* 1074093 (421-C)	1
		CAST BRASS		1074096 (421-CB)	
13	HEX SCREW	PLATED STEEL		* 1072398 (SCZ-0004)	4
		STN. STL.		1080720 (SCS-0142)	
14	DIAPHRAGM	BUNA N		* 1074119	1
		FKM		1074120	
15	HEX NUT	PLATED STEEL		* 1071656 (NUZ-0008)	4
		STN. STL.		1071649 (NUS-0007)	
16	O-RING	BUNA N		* 1071689 (ORB-110TC)	1
		E.P.D.M.		1071726 (ORE-110TC)	
		FKM		1071798 (ORV-110)	
17	SHAFT (NORMALLY OPEN)			* 1074150 (421-L)	1

SEE REVERSE SIDE FOR
CONFIGURATION OPTIONS

FORM NO. 1077613

D	NUMBER	CONVERSION	1588	MSM	27NOV02
REV	DESCRIPTION		ECO	DWN	DATE
					APVD



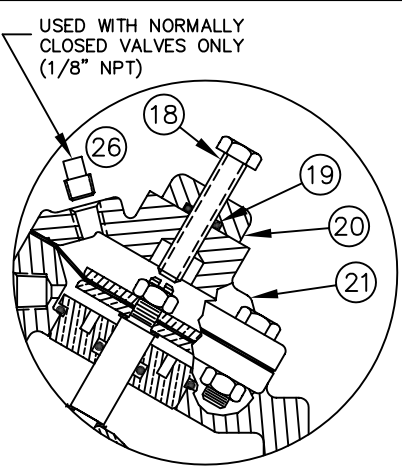
OSMONICS
ROCKFORD OPERATIONS

2412 GRANT AVENUE, ROCKFORD, IL 61103-3991 (815) 964-9421
WWW.OSMONICS.COM

SERIES 421 DIAPHRAGM VALVE

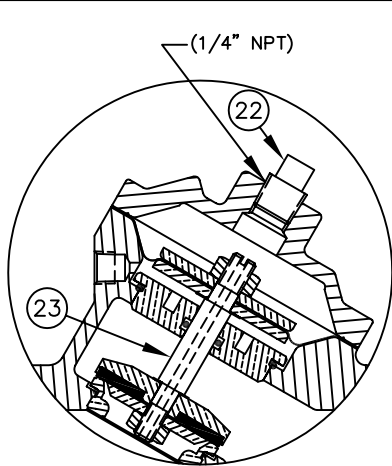
3/4" & 1" N.P.T.

SCALE	DRAWN	DATE	DWG. NO.
N/A	JWB	25APR01	1084018



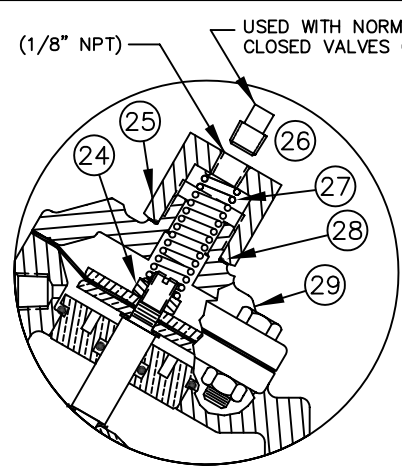
1072563 (V42B-0010-00000) (3/4" NPT)
1070015 (V42C-0010-00000) (1" NPT)

LIMIT STOP



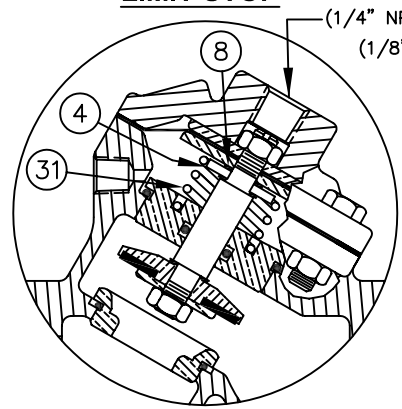
1070002 (V42B-0030-00000) (3/4" NPT)
1070012 (V42C-0030-00000) (1" NPT)

NORMALLY CLOSED



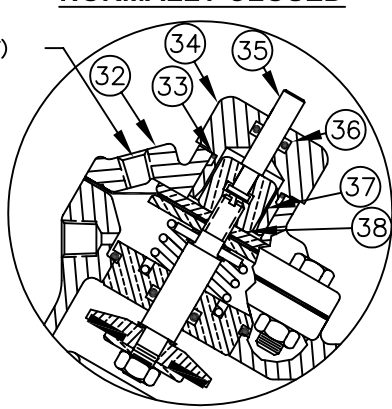
1070003 (V42B-0002-00000) (3/4" NPT)
1070013 (V42C-0002-00000) (1" NPT)

SPRING ASSIST CLOSED



1070004 (V42B-0001-00000) (3/4" NPT)
1070014 (V42C-0001-00000) (1" NPT)

SPRING ASSIST OPEN



1077144 (V42B-0021-00000) (3/4" NPT)
1072648 (V42C-0021-00000) (1" NPT)

POSITION INDICATOR

NOTE:

1. SPRING ASSIST CLOSED MODEL CANNOT BE COMBINED WITH LIMIT STOP OR POSITION INDICATOR MODELS.
2. VALVES AVAILABLE WITH B.S.P. OR J.I.S. END CONNECTIONS.

NO.	DESCRIPTION	STD	PART NO.	QTY.
LIMIT STOP MODEL				
18	SCREW	*	1072361 (SCS-0030)	1
19	O-RING	*	1071668 (ORB-012)	1
20	HEX NUT	*	1077534 (400-H)	1
21	CAP	CAST IRON	* 1074101 (421-CCC)	1
		CAST BRASS	1074104 (421-CCCB)	

NORMALLY CLOSED MODEL				
22	PIPE PLUG (1/4" N.P.T.)	PLATED STEEL	* 1071918 (PLZ-0008)	1
		BRASS	1071904 (PLB-0009)	
		STN. STL.	1071915 (PLS-0001)	
23	SHAFT (NORMALLY CLOSED)	*	1074153 (421-LL)	1

SPRING ASSIST CLOSED MODEL				
24	CENTERING NUT	*	1074185 (421-X)	1
25	RETAINER NUT	BRASS	* 1074183 (421-TT)	1
		STN. STL.	1074184 (421-TTS)	
26	PIPE PLUG (1/8" N.P.T.)	PLATED STEEL	* 1071917 (PLZ-0005)	1
		BRASS	1071903 (PLB-0007)	
		STN. STL.	1071916 (PLS-0002)	
27	SPRING	*	1074180 (421-SS)	1
28	O-RING	*	1071674 (ORB-020)	1
29	CAP	CAST IRON	* 1074099 (421-CC)	1
		CAST BRASS	1074100 (421-CCB)	

SPRING ASSIST OPEN MODEL				
4	DISC PLATE	BRASS	* 1074147 (421-K)	1
		STN. STL.	1074149 (421-KS)	
8	GASKET	COPPER	* 1073948 (200-GG)	1
		LEAD	1073949 (200-GGL)	
31	SPRING	*	1074175 (421-SB)	1

POSITION INDICATOR MODEL				
32	CAP	CAST IRON	* 1074107 (421-CF)	1
		CAST BRASS	1074110 (421-CFB)	
33	O-RING	*	1071692 (ORB-116)	1
34	SHAFT GUIDE BUSHING	*	1074121 (421-GF)	1
35	INDICATOR SHAFT	*	1074164 (421-PM)	1
36	O-RING	*	1071688 (ORB-108TC)	1
37	TOP NUT	*	1074182 (421-TB)	1
38	LOCKWASHER	*	1073589 (WAS-0006)	1

SEE REVERSE SIDE FOR STANDARD NORMALLY OPEN MODEL

FORM NO. 1077613

D	NUMBER	CONVERSION	1588	MSM	27NOV02
REV	DESCRIPTION	ECO	DWN	DATE	APVD



SERIES 421 DIAPHRAGM VALVE
3/4" & 1" N.P.T.

SCALE	DRAWN	DATE	DWG. NO.
N/A	JWB	25APR01	1084018

CONVERSION KITS	
DESCRIPTION	PART NO.
CONVERSION KIT (LIMIT STOP) CONSISTS OF STANDARD ITEM NO'S 18 THRU 21	1074155 (421-LSC)
CONVERSION KIT (SPRING ASSIST CLOSED) CONSISTS OF STANDARD ITEM NO'S 24 THRU 29	1074177 (421-SCC)
CONVERSION KIT (SPRING ASSIST OPEN) CONSISTS OF STANDARD ITEM NO'S 4,8,10,31	1074179 (421-SOC)
CONVERSION KIT (POSITION INDICATOR) CONSISTS OF STANDARD ITEM NO'S 32 THRU 38	1074163 (421-PIC)

REPAIR PARTS KITS	
DESCRIPTION	PART NO.
INT. PARTS KIT (LIMIT STOP) CONSISTS OF STANDARD ITEM NO'S 18,19,20	1074154 (421-LS)
INT. PARTS KIT (NORM. CLOSED) CONSISTS OF STANDARD ITEM NO'S 4,7,10,11(2),23	1070129 (421-RC)
INT. PARTS KIT (SPRING ASSIST CLOSED) CONSISTS OF STANDARD ITEM NO'S 24,27,28	1074176 (421-SC)
INT. PARTS KIT (SPRING ASSIST OPEN) CONSISTS OF STANDARD ITEM NO'S 4,8,31	1074178 (421-SO)
INT. PARTS KIT (POSITION INDICATOR) CONSISTS OF STD ITEM NO'S 33 THRU 38	1074162 (421-PI)