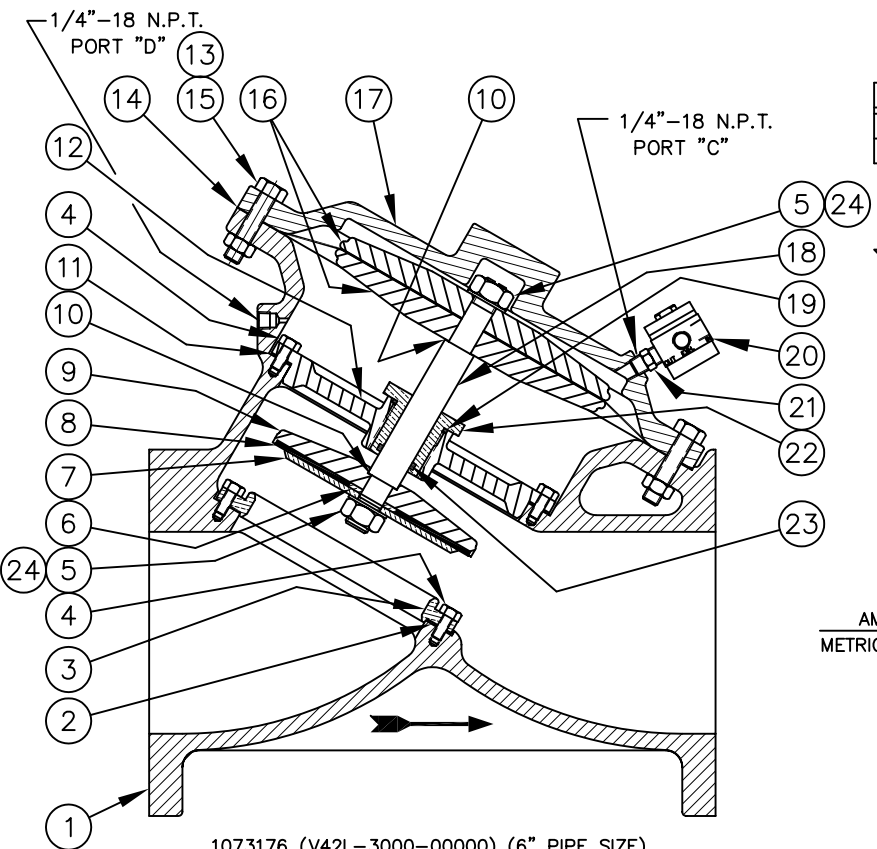
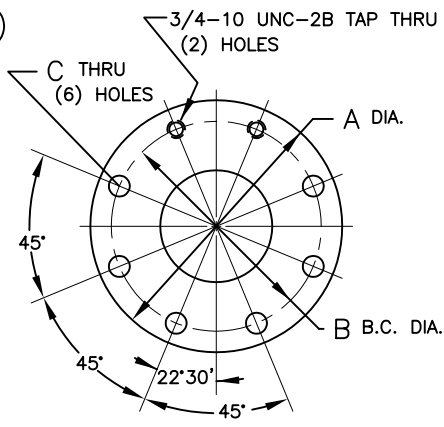


REPAIR PARTS KITS	
DESCRIPTION	PART NO.
DIAPHRAGM & SEALS KIT CONSISTS OF ITEM NO'S 2,5(2),8,10(2),11,14,19,23,24(2)	1070074 (429-RA) 1070099 (429-RAV)
	BUNA N INCLUDES DIAPHRAGM 1074622 (429-FB) FKM INCLUDES DIAPHRAGM 1074623 (429-FV)
	1074653 (429-RF)
INT. PARTS KIT (NORM. OPEN) CONSISTS OF STANDARD ITEM NO'S 4,(12)6,7,9,12,16(2),18,22	1074653 (429-RF)
SEAT ITEM NO. 3,4(8)	1074640 (429-MO)

NOTE:
1. AMERICAN NATIONAL STANDARD TAPER PIPE
THREADS (NPT) PER ANSI B2.1-1968



FLANGE STYLE	A	B	C
AMERICAN	11.000	9.500	.875
METRIC	279 MM	240 MM	22 MM



AMERICAN FLANGE PER A.S.A. 16.1 CLASS 125
METRIC FLANGE PER BS 4504, DIN 10 & ISO R 2084

NO.	DESCRIPTION	STD	PART NO.	QTY.
1	BODY	CAST IRON	* 1074613 (429-A)	1
2	SEAT GASKET	BUNA N	* 1074642 (429-N)	1
		FKM	1074643 (429-NV)	
3	SEAT	BRASS	* 1074640 (429-MO)	1
4	HEX SCREW (5/16-18X3/4)	*	1072355 (SCS-0011)	20
5	HEX LOCK NUT	*	1071654 (NUS-0025)	2
6	DISC SPACER	BRASS	* 1074628 (429-HA)	1
7	DISC PLATE	BRASS	* 1074634 (429-K)	1
		BUNA N	* 1074631 (429-J)	
8	DISC	FKM	1074633 (429-JV)	1
		HYCAR	1074632 (429-JH)	
		BRASS	* 1074627 (429-H)	
9	DISC HOLDER	BRASS	* 1074627 (429-H)	1
10	GASKET	COPPER	* 1073952 (201-M)	2
		LEAD		
11	CENTERING PLATE GASKET	BUNA N	* 1074644 (429-O)	1
		FKM	1074645 (429-OV)	
12	CENTERING PLATE	CAST IRON	* 1074625 (429-GO)	1
13	HEX NUT	PLATED STEEL	* 1071659 (NUZ-0021)	16
14	DIAPHRAGM	BUNA N	* 1074622 (429-FB)	1
		FKM	1074623 (429-FV)	
15	HEX SCREW	PLATED STEEL	* 1072410 (SCZ-0038)	16
16	DIAPHRAGM PLATE	BRASS	* 1074620 (429-D)	2
17	CAP	CAST IRON	* 1074615 (429-C)	1
18	SHAFT (NORMALLY OPEN)	*	1074636 (429-L)	1
		BUNA N	* 1076766 (ORB-214)	
		E.P.D.M.	1071746 (ORE-214)	
19	O-RING	FKM	1071817 (ORV-214)	1
		*	1074661 (429-VP)	
20	AUXILIARY PILOT VALVE (SEE SHEET V429-1B)	*	1074661 (429-VP)	1
21	HEX NIPPLE	*	1081648 (510-CM)	1
22	SHAFT GUIDE	BRASS	* 1074646 (429-P)	1
23	O-RING	BUNA N	* 1071703 (ORB-223)	1
		FKM	1071820 (ORV-223)	
24	LOCKWASHER	*	1073592 (WAS-0011)	2

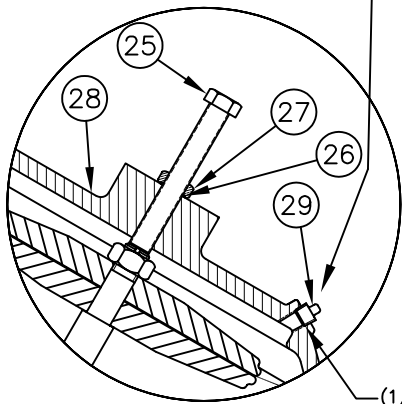
SEE REVERSE SIDE FOR
CONFIGURATION OPTIONS

FORM NO. 1077619

E	SEE SHEET 2	NONE	MSM	19FEB04
REV	DESCRIPTION	ECO	DWN	DATE APVD
 OSMONICS ROCKFORD OPERATIONS 2412 GRANT AVENUE, ROCKFORD, IL 61103-3991 (815) 964-9421 WWW.OSMONICS.COM				
SERIES 429 DIAPHRAGM VALVE				
6" PIPE SIZE				
SCALE	DRAWN	DATE	DWG. NO.	
N/A	JWB	08MAY01	1084024	

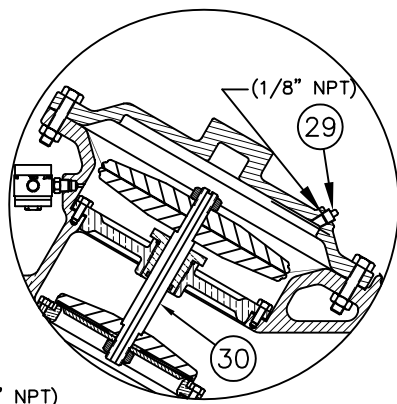
1073176 (V42L-3000-00000) (6" PIPE SIZE)
NORMALLY OPEN (STANDARD)

(USED WITH NORMALLY CLOSED VALVES ONLY)



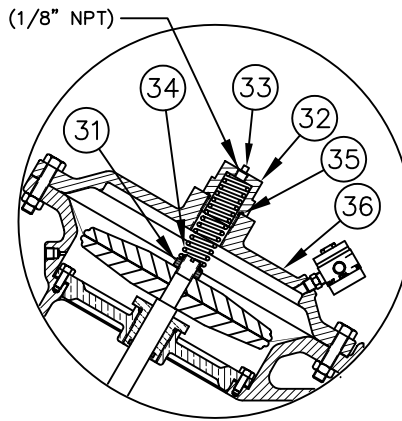
1073184 (V42L-3010-00000)

LIMIT STOP



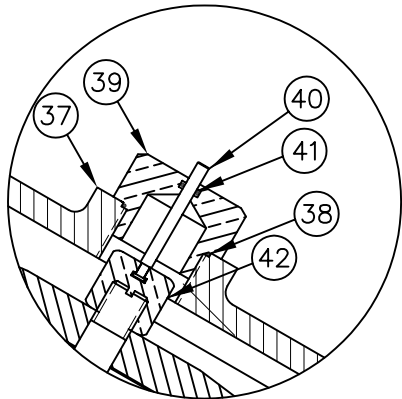
1073187 (V42L-3030-00000)

NORMALLY CLOSED



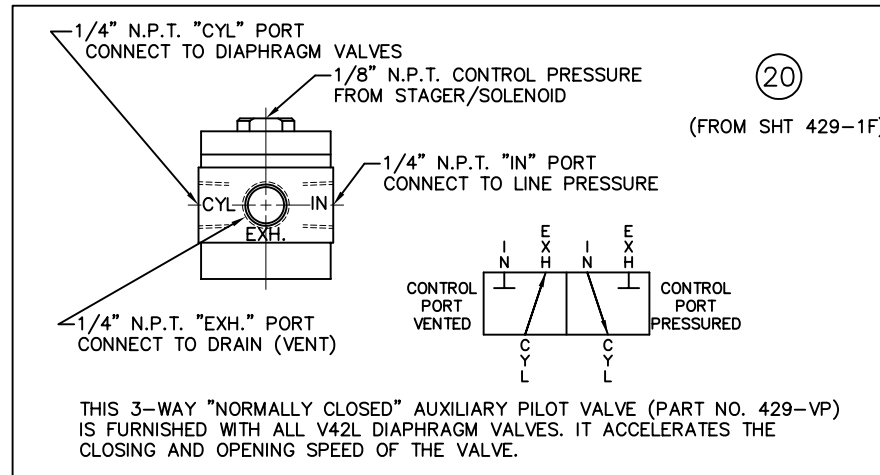
V42L-3002-00000

SPRING ASSIST CLOSED



V42L-3020-00000

POSITION INDICATOR



REPAIR PARTS KITS

DESCRIPTION	PART NO.
INT. PARTS KIT (LIMIT STOP) CONSISTS OF STANDARD ITEM NO'S 25,26,27	1074638 (429-LS)
INT. PARTS KIT (NORM. CLOSED) CONSISTS OF STANDARD ITEM NO'S 4,(12),6,7,9,12,16(2),22,30	1074654 (429-RG)
INT. PARTS KIT (SPRING ASSIST CLOSED) CONSISTS OF STANDARD ITEM NO'S 31,34,35	1074655 (429-SC)
INT. PARTS KIT (POSITION INDICATOR) CONSISTS OF STD ITEM NO'S 37 THRU 42	1074647 (429-PI)

CONVERSION KITS

DESCRIPTION	PART NO.
CONVERSION KIT (LIMIT STOP) CONSISTS OF STANDARD ITEM NO'S 25,26,27,28	1074639 (429-LSC)
CONVERSION KIT (SPRING ASSIST CLOSED) CONSISTS OF STANDARD ITEM NO'S 31 THRU 36	1074656 (429-SCC)
CONVERSION KIT (POSITION INDICATOR) CONSISTS OF STANDARD ITEM NO'S 37 THRU 42	1074648 (429-PIC)

NO.	DESCRIPTION	STD	PART NO.	QTY.
LIMIT STOP MODEL				
25	SCREW	*	1074660 (429-U)	1
26	O-RING	*	1071690 (ORB-112)	1
27	NUT	*	1074434 (426-U)	1
28	CAP	CAST IRON	1074617 (429-CCC)	1
NORMALLY CLOSED MODEL				
29	PIPE PLUG (1/4" N.P.T.)	PLATED STEEL	* 1071918 (PLZ-0008)	1
		BRASS	1071904 (PLB-0009)	
		STN. STL.	1071915 (PLS-0001)	
30	SHAFT (NORMALLY CLOSED)	*	1074637 (429-LL)	1
SPRING ASSIST CLOSED MODEL				
31	CENTERING NUT	STN. ST.	* 1074663 (429-X)	1
32	RETAINER NUT	BRASS	* 1074659 (429-TT)	1
33	PIPE PLUG (1/8" N.P.T.)	PLATED STEEL	* 1071917 (PLZ-0005)	1
		BRASS	1071903 (PLB-0007)	
		STN. STL.	1071916 (PLS-0002)	
34	SPRING	*	1074657 (429-SS)	1
35	O-RING	*	1079839 (ORB-222)	1
36	CAP	CAST IRON	* 1074616 (429-CC)	1
POSITION INDICATOR MODEL				
37	CAP	CAST IRON	* 1074618 (429-CF)	1
38	O-RING	*	1071694 (ORB-128)	1
39	SHAFT GUIDE BUSHING	*	1074624 (429-GF)	1
40	INDICATOR SHAFT	*	1074649 (429-PM)	1
41	O-RING	*	1071688 (ORB-108TC)	1
42	TOP NUT	*	1074658 (429-TB)	1

NOTE:

1. SPRING ASSIST CLOSED MODEL CANNOT BE COMBINED WITH LIMIT STOP OR POSITION INDICATOR MODELS.
2. SPRING ASSIST OPEN MODEL NOT AVAILABLE.

SEE REVERSE SIDE FOR STANDARD NORMALLY OPEN MODEL

FORM NO. 1077619

E	CORRECTED ITEM NOS. IN LS CONV. KIT	NONE	MSM	19FEB04	
REV	DESCRIPTION	ECO	DWN	DATE	APVD
<p>OSMONICS ROCKFORD OPERATIONS 2412 GRANT AVENUE, ROCKFORD, IL 61103-3991 (815) 964-9421 WWW.OSMONICS.COM</p>					
SERIES 429 DIAPHRAGM VALVE					
6" PIPE SIZE					
SCALE	DRAWN	DATE	DWG. NO.		
N/A	JWB	02MAY01	1084024		